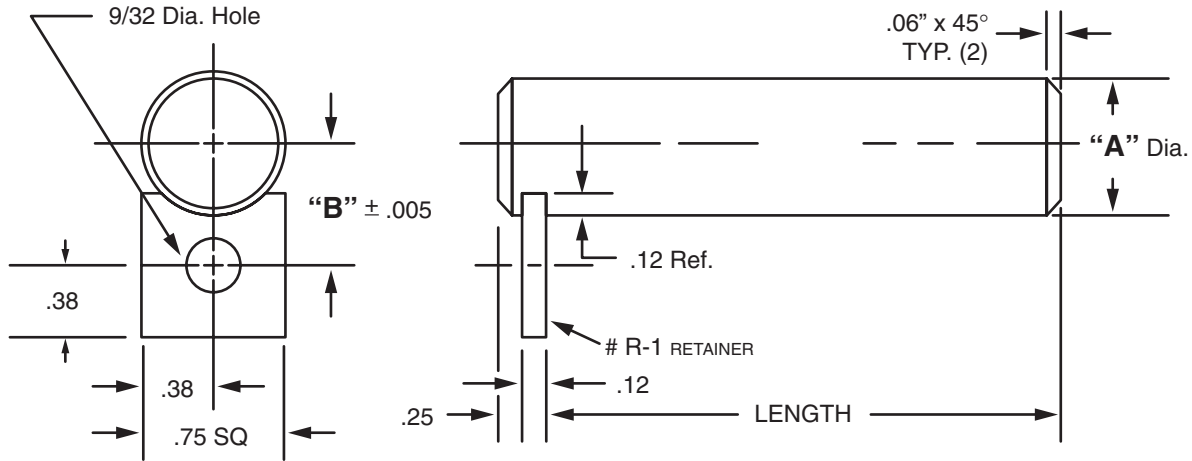




MASTERLINE SHAFT ASSEMBLY



For Tolerance on "A" Dia., see Section I, page 7

"A" Dia.	"B" Dim.	Cad File No.	"A" Dia.	"B" Dim.	Cad File No.
.250	.375	Z250	.688	.594	Z688
.312	.406	Z312	.750	.625	Z750
.375	.437	Z375	.812	.656	Z812
.437	.469	Z437	.875	.688	Z875
.500	.500	Z500	.937	.719	Z937
.562	.531	Z562	1.000	.750	Z1000
.625	.562	Z625			

Available in four (4) series:

- "S" – 12L14 CRS
- "M" – T.G. & P. Alloy, HDN R_C 28-32
- "H" – 12L14 CRS, CARB., HDN. & GR., R_C 56-60 (.03 min. case)
- "Y" – 304 Stainless Steel

Other diameters are available on request. (see "How To Order")

Each assembly includes one shaft and one retainer. Stainless steel retainer provided with series "Y".

Other retainers are available on request. (see Section VII, page 17 – 20).

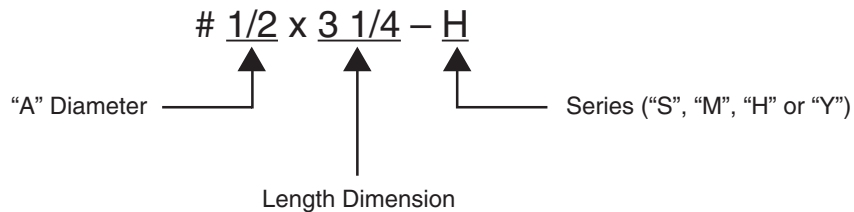
Shafts and retainers may be ordered separately.

Shafts are available with lube holes, lube grooves and extractor options.

(refer to Sec. II, page 3 and Sec. V, page 1 & 4)

Masterline Shaft Assembly

How To Order:



All Parts Available In Inch And Metric.