

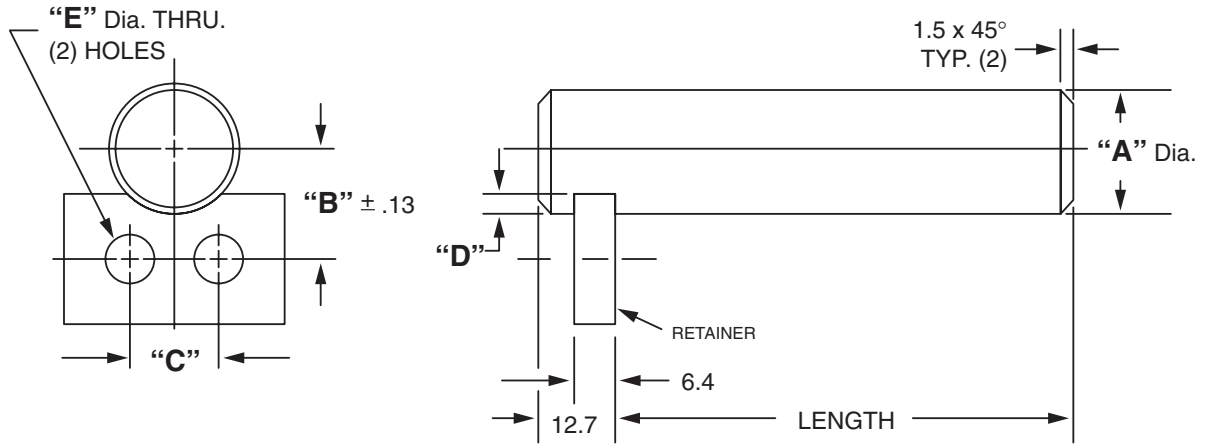


Masterline® Design & Mfg., Inc.

DESIGN SERVICES & PRODUCTS

41580 Production Dr. • Harrison Twp., Michigan 48045 • (586) 463-5888 • Fax (586) 463-8817

MASTERLINE METRIC EXTRA HEAVY DUTY SHAFT ASSEMBLY



For Tolerance on "A" Dia., see Section I, page 7

"A" Dia.	"B" Dim.	"C" Dim.	"D" Dim.	"E" Dia.	Retainer
50M	38.6M	30M	6.4M	8.8M	MRD-8
55M	41.1M	30M	6.4M	8.8M	MRD-8
60M	43.6M	30M	6.4M	8.8M	MRD-8
65M	46.1M	30M	6.4M	8.8M	MRD-8
70M	48.6M	30M	6.4M	8.8M	MRD-8
75M	53.9M	38M	9.5M	8.8M	MRD-9
80M	56.4M	38M	9.5M	8.8M	MRD-9
85M	58.9M	38M	9.5M	8.8M	MRD-9
90M	61.4M	38M	9.5M	8.8M	MRD-9
95M	64.0M	38M	9.5M	8.8M	MRD-9
100M	66.4M	38M	9.5M	8.8M	MRD-9

Available in four (4) series:

"US" – 12L14 CRS

"UM" – T.G. & P. Alloy, HDN R_c 28-32

"UH" – 12L14 CRS, CARB., HDN. & GR., R_c 56-60 (.75mm min. case)

"UY" – 304 Stainless Steel

Other diameters are available on request. (see "How To Order")

Each assembly includes one shaft and one retainer. Stainless steel retainer provided with series "UY".

Other retainers are available on request. (see Section VII, page 17 – 20).

Shafts and retainers may be ordered separately.

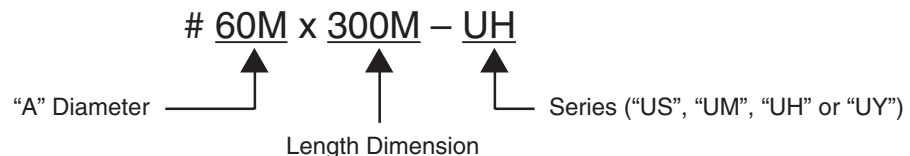
Shafts are available with lube holes, lube grooves and extractor options.

(refer to Sec. II, page 12 and Sec. V, page 1 & 4)

Masterline Metric Extra Heavy Duty Shaft Assembly

To specify metric (millimeters) when ordering, use a capital "M" behind each dimension.

How To Order:



All Parts Available In Inch And Metric.