

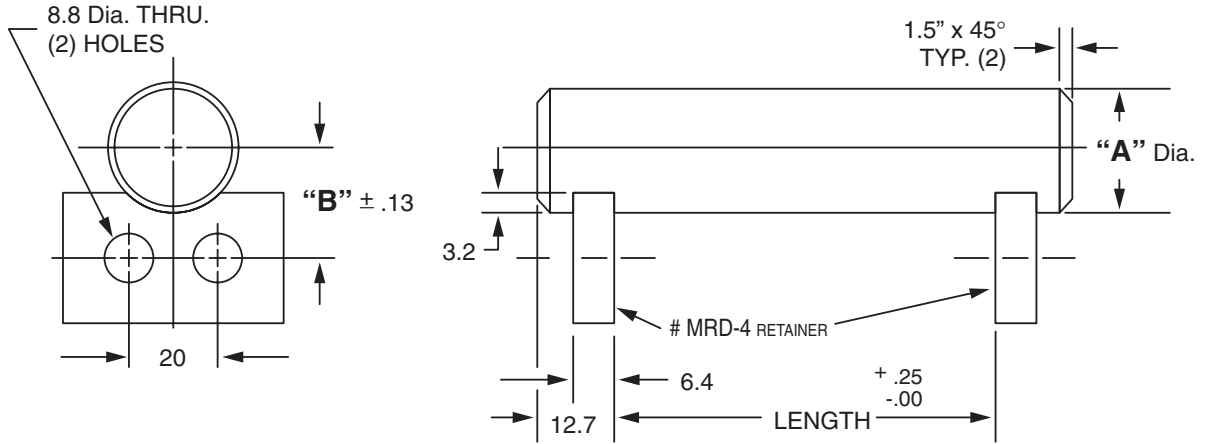


Masterline® Design & Mfg., Inc.

DESIGN SERVICES & PRODUCTS

41580 Production Dr. • Harrison Twp., Michigan 48045 • (586) 463-5888 • Fax (586) 463-8817

**MASTERLINE METRIC HEAVY DUTY DOUBLE RETAINER SHAFT ASSEMBLY**



For Tolerance on "A" Dia., see Section I, page 7

"A" Dia.	"B" Dim.	"A" Dia.	"B" Dim.
25M	23.3M	55M	35.8M
30M	25.8M	60M	40.8M
40M	28.3M	65M	43.3M
45M	30.8M	70M	45.8M
50M	33.3M	75M	48.3M

Available in four (4) series:

- "DS" – 12L14 CRS
- "DM" – T.G. & P. Alloy, HDN R<sub>C</sub> 28-32
- "DH" – 12L14 CRS, CARB., HDN. & GR., R<sub>C</sub> 56-60 (.75mm min. case)
- "DY" – 304 Stainless Steel

Other retainers are available on request. (see Section VII, page 17 – 20).

Each assembly includes one shaft and two retainers. Stainless steel retainer provided with series "DY".

Shafts and retainers may be ordered separately.

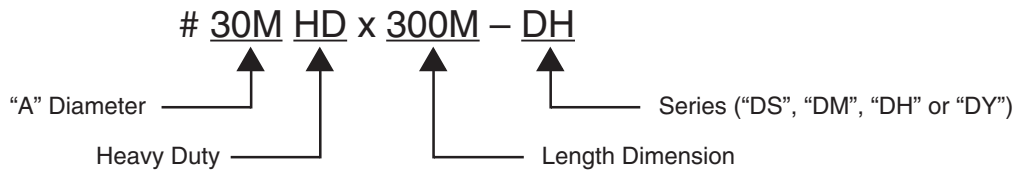
Shafts are available with lube holes, lube grooves and extractor options.

(refer to Sec. II, page 20 and Sec. V, page 1 & 4)

**Masterline Metric Heavy Duty Double Retainer Shaft Assembly**

To specify metric (millimeters) when ordering, use a capital "M" behind each dimension.

**How To Order:**



All Parts Available In Inch And Metric.