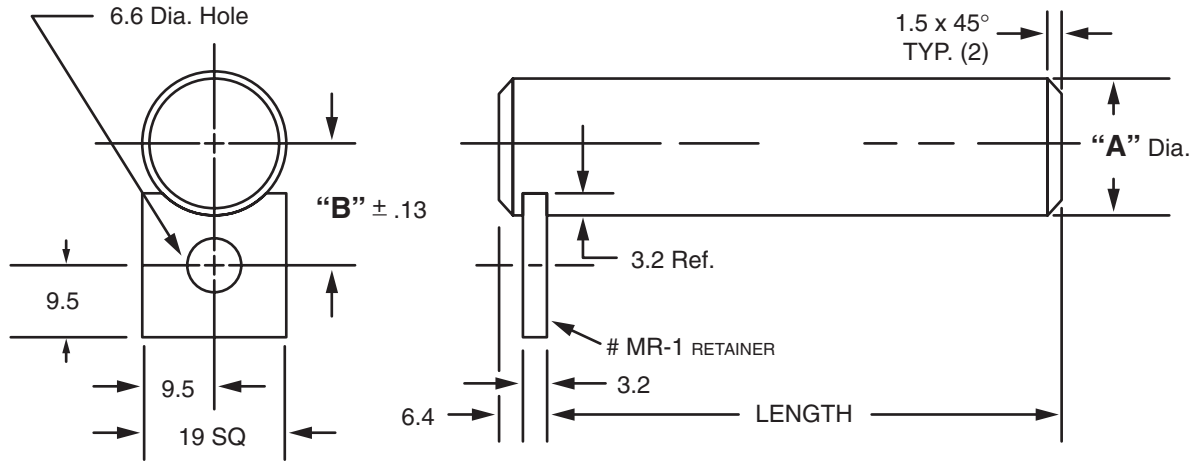




## MASTERLINE METRIC SHAFT ASSEMBLY



For Tolerance on "A" Dia., see Section I, page 7

"A" Dia.	"B" Dim.	Cad File No.	"A" Dia.	"B" Dim.	Cad File No.
6M	9.3	SDZ6-M	15M	13.8	SDZ15-M
7M	9.8	SDZ7-M	16M	14.3	SDZ16-M
8M	10.3	SDZ8-M	18M	15.3	SDZ18-M
10M	11.3	SDZ10-M	20M	16.3	SDZ20-M
12M	12.3	SDZ12-M	22M	17.3	SDZ22-M
13M	12.8	SDZ13-M	24M	18.3	SDZ24-M
14M	13.3	SDZ14-M	25M	18.8	SDZ25-M

Available in four (4) series:

- "S" – 12L14 CRS
- "M" – T.G. & P. Alloy, HDN R<sub>c</sub> 28-32
- "H" – 12L14 CRS, CARB., HDN. & GR., R<sub>c</sub> 56-60 (.75mm min. case)
- "Y" – 304 Stainless Steel

Other diameters are available on request. (see "How To Order")

Each assembly includes one shaft and one retainer. Stainless steel retainer provided with series "Y".

Other retainers are available on request. (see Section VII, page 17 – 20).

Shafts and retainers may be ordered separately.

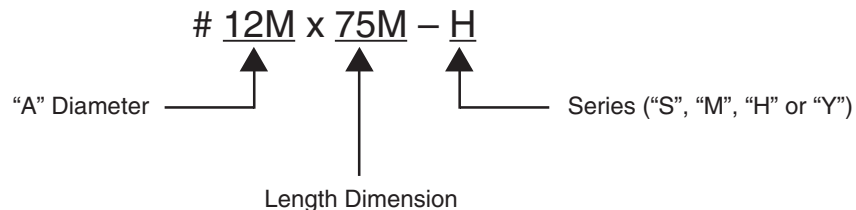
Shafts are available with lube holes, lube grooves and extractor options.

(refer to Sec. II, page 4 and Sec. V, page 1 & 4)

### Masterline Metric Shaft Assembly

To specify metric (millimeters) when ordering, use a capital "M" behind each dimension.

#### How To Order:



All Parts Available In Inch And Metric.