

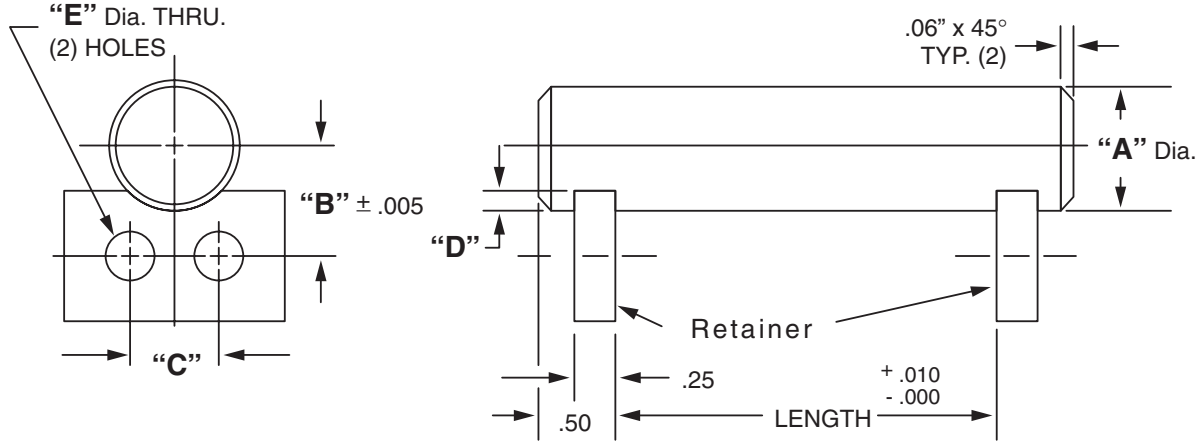


Masterline® Design & Mfg., Inc.

DESIGN SERVICES & PRODUCTS

41580 Production Dr. • Harrison Twp., Michigan 48045 • (586) 463-5888 • Fax (586) 463-8817

## MASTERLINE EXTRA HEAVY DUTY DOUBLE RETAINER SHAFT ASSEMBLY



For Tolerance on "A" Dia., see Section I, page 7

"A" Dia.	"B" Dim.	"C" Dim.	"D" Dim.	"E" Dia.	Retainer	Cad File No.
1.250	1.195	1.12	.25	11/32	RD-8	EUDZ1250
1.500	1.320	1.12	.25	11/32	RD-8	EUDZ1500
1.750	1.445	1.12	.25	11/32	RD-8	EUDZ1750
2.000	1.570	1.12	.25	11/32	RD-8	EUDZ2000
2.250	1.695	1.12	.25	11/32	RD-8	EUDZ2250
2.500	1.875	1.50	.38	13/32	RD-9	EUDZ2500
2.750	2.000	1.50	.38	13/32	RD-9	EUDZ2750
3.000	2.125	1.50	.38	13/32	RD-9	EUDZ3000
3.500	2.375	1.50	.38	13/32	RD-9	N/A
4.000	2.625	1.50	.38	13/32	RD-9	N/A

Available in four (4) series:

"UDS" – 12L14 CRS

"UDM" – T.G. & P. Alloy, HDN R<sub>C</sub> 28-32

"UDH" – 12L14 CRS, CARB., HDN. & GR., R<sub>C</sub> 56-60 (.03 min. case)

"UDY" – 304 Stainless Steel

Other retainers are available on request. (see Section VII, page 17 – 20).

Each assembly includes one shaft and two retainers. Stainless steel retainer provided with series "UDY".

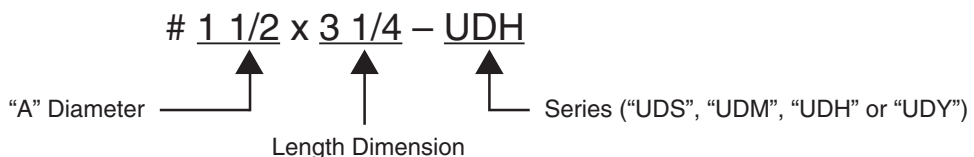
Shafts and retainers may be ordered separately.

Shafts are available with lube holes, lube grooves and extractor options.

(refer to Sec. II, page 22 and Sec. V, page 1 & 4)

### Masterline Extra Heavy Duty Double Retainer Shaft Assembly

#### How To Order:



All Parts Available In Inch And Metric.