

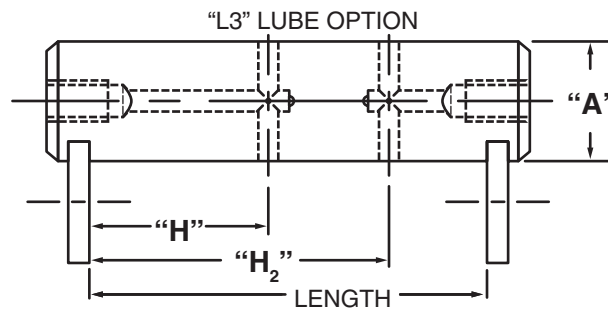
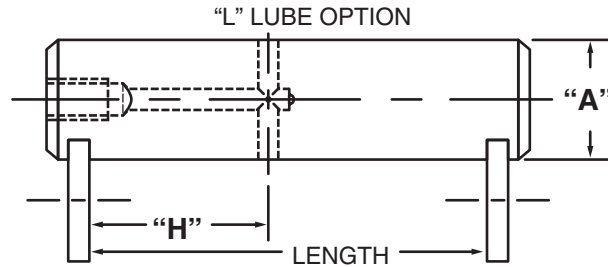


Masterline® Design & Mfg., Inc.

DESIGN SERVICES & PRODUCTS

41580 Production Dr. • Harrison Twp., Michigan 48045 • (586) 463-5888 • Fax (586) 463-8817

## MASTERLINE EXTRA HEAVY DUTY DOUBLE RETAINER SHAFT ASSEMBLY WITH LUBE HOLE



Note: Dimensions to lube holes are taken from inside of slot.

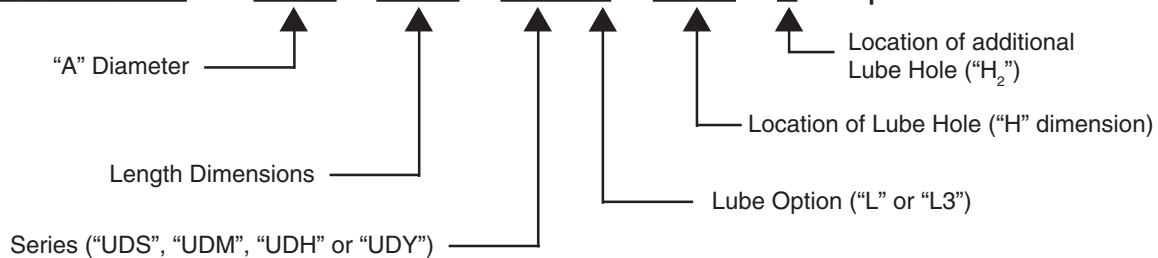
Shafts have 1/8 - 27 N.P.T. in ends. Optional thread for 1/8 - 27 N.P.T. is 1/8 - 28 B.S.P.T.

"L3" option is recommended for use on shafts 10" or longer when more than one cross-hole is necessary and access to both ends of shaft is possible.

### Masterline Extra Heavy Duty Double Retainer Shaft Assembly with Lube Hole

(Note: Refer to Section II, page 21 for additional ordering information.)

**How To Order:** # 1 1/2 x 3 1/4 - UDH L - 1 5/8 - 2 - Optional Thread



All Parts Available In Inch And Metric.