

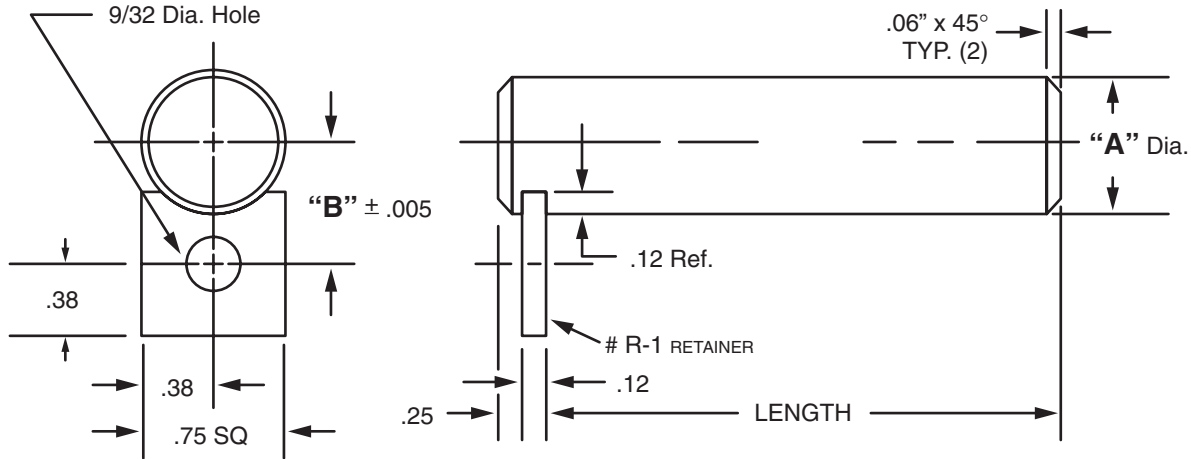


Masterline® Design & Mfg., Inc.

DESIGN SERVICES & PRODUCTS

41580 Production Dr. • Harrison Twp., Michigan 48045 • (586) 463-5888 • Fax (586) 463-8817

MASTERLINE SPECIAL TOLERANCE SHAFT ASSEMBLY (FOR PTFE BEARINGS)



"A" Dia.	"B" Dim.	Cad File No.
1/8 .1243 .1236	.375	SDZ1-8
5/32 .1554 .1547	.390	SDZ5-32
3/16 .1865 .1858	.406	SDZ3-16
1/4 .2490 .2481	.375	SDZ1-4
5/16 .3115 .3106	.406	SDZ5-16
3/8 .3740 .3731	.437	SDZ3-8
7/16 .4365 .4355	.468	SDZ7-16
1/2 .4990 .4980	.500	SDZ1-2

"A" Dia.	"B" Dim.	Cad File No.
9/16 .5615 .5605	.531	SDZ9-16
5/8 .6240 .6230	.562	SDZ5-8
11/16 .6865 .6855	.593	SDZ11-16
3/4 .7491 .7479	.625	SDZ3-4
13/16 .8116 .8104	.656	SDZ13-16
7/8 .8741 .8729	.687	SDZ7-8
1 .9991 .9979	.750	SDZ1

Available in two (2) series:

"SDU" – mild carbon steel, ground to size

"SDY" – 304 Stainless Steel

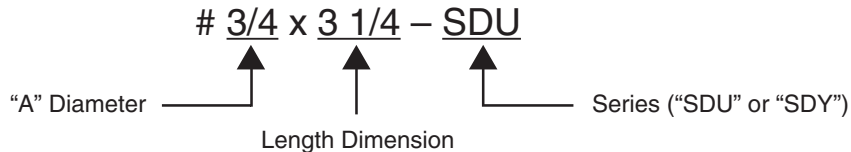
Each assembly includes one shaft and one retainer. Stainless steel retainer provided with series "SDY".

Other retainers are available on request. (see Section VII, page 17 – 20).

Shafts and retainers may be ordered separately.

Masterline Special Tolerance Shaft Assembly (for PTFE Bearings)

How To Order:



All Parts Available In Inch And Metric.