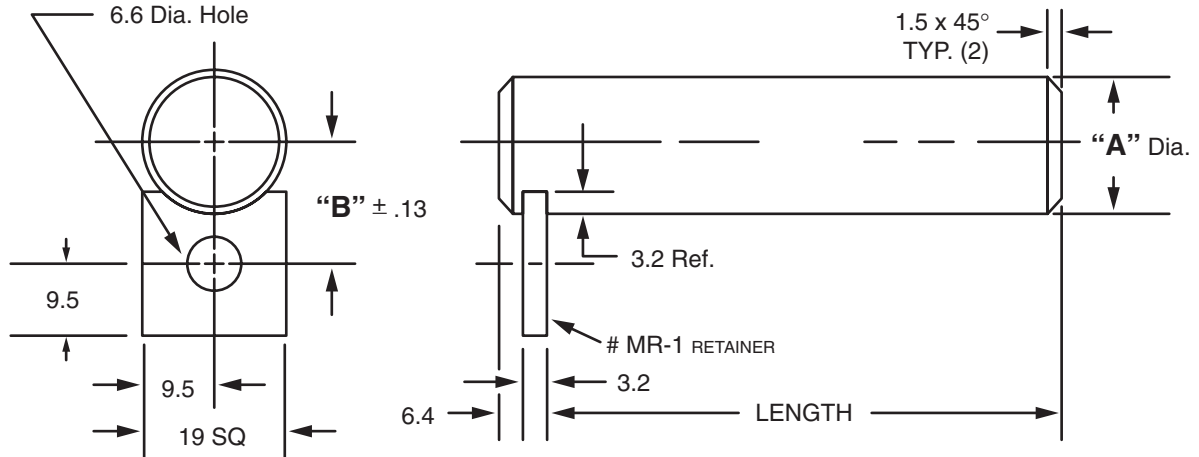




**MASTERLINE METRIC SPECIAL TOLERANCE SHAFT ASSEMBLY
(FOR PTFE BEARINGS)**



	"A" Dia.	"B" Dim.	Cad File No.
5M	4.990 4.978	10.43	SDZ5-M
6M	5.990 5.978	9.34	SDZ6-M
7M	6.987 6.972	9.84	SDZ7-M
8M	7.987 7.972	10.34	SDZ8-M
10M	9.987 9.972	11.34	SDZ10-M
12M	11.984 11.966	12.34	SDZ12-M
13M	12.984 12.966	12.84	SDZ13-M
14M	13.984 13.966	13.34	SDZ14-M

	"A" Dia.	"B" Dim.	Cad File No.
15M	14.984 14.966	13.84	SDZ15-M
16M	15.984 15.966	14.34	SDZ16-M
18M	17.984 17.966	15.34	SDZ18-M
20M	19.980 19.959	16.33	SDZ20-M
22M	21.980 21.959	17.33	SDZ22-M
24M	23.980 23.959	18.33	SDZ24-M
25M	24.980 24.959	18.83	SDZ25-M

Available in two (2) series:

"SDU" – mild carbon steel, ground to size

"SDY" – 304 Stainless Steel

Each assembly includes one shaft and one retainer. Stainless steel retainer provided with series "SDY".

Other retainers are available on request. (see Section VII, page 17 – 20).

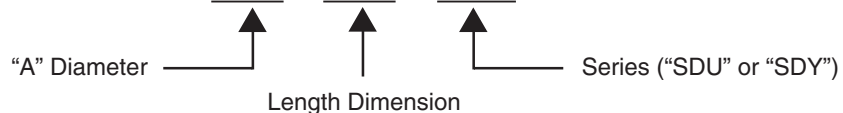
Shafts and retainers may be ordered separately.

Masterline Metric Special Tolerance Shaft Assembly (for PTFE Bearings)

To specify metric (millimeters) when ordering, use a capital "M" behind each dimension.

How To Order:

12M x 75M – SDU



All Parts Available In Inch And Metric.