

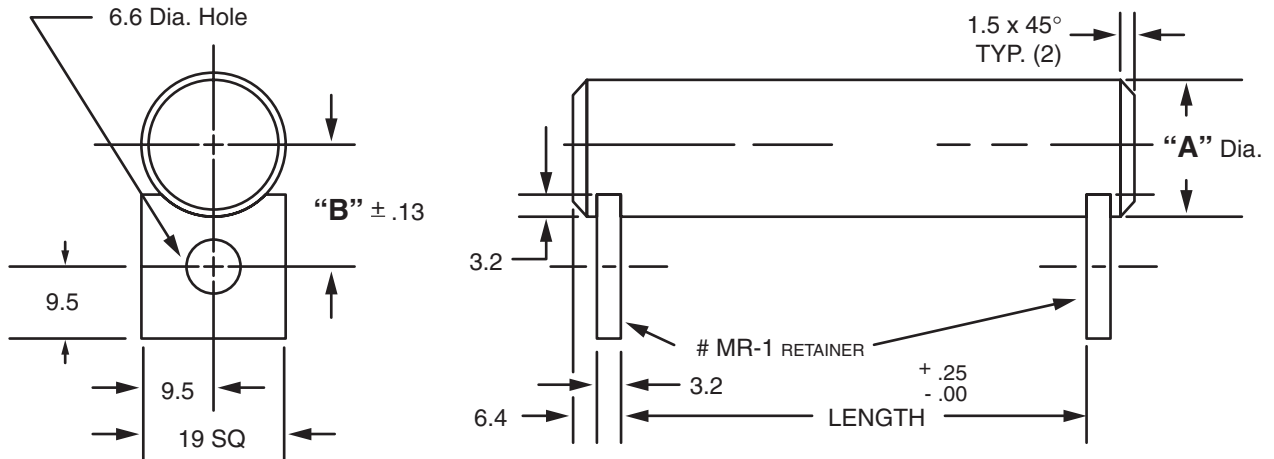


Masterline® Design & Mfg., Inc.

DESIGN SERVICES & PRODUCTS

41580 Production Dr. • Harrison Twp., Michigan 48045 • (586) 463-5888 • Fax (586) 463-8817

MASTERLINE METRIC SPECIAL TOLERANCE DOUBLE RETAINER SHAFT ASSEMBLY (FOR PTFE BEARINGS)



	"A" Dia.	"B" Dim.	Cad File No.		"A" Dia.	"B" Dim.	Cad File No.
5M	4.990 4.978	10.43	SDZ5-M	15M	14.984 14.966	13.84	SDZ15-M
6M	5.990 5.978	9.34	SDZ6-M	16M	15.984 15.966	14.34	SDZ16-M
7M	6.987 6.972	9.84	SDZ7-M	18M	17.984 17.966	15.34	SDZ18-M
8M	7.987 7.972	10.34	SDZ8-M	20M	19.980 19.959	16.33	SDZ20-M
10M	9.987 9.972	11.34	SDZ10-M	22M	21.980 21.959	17.33	SDZ22-M
12M	11.984 11.966	12.34	SDZ12-M	24M	23.980 23.959	18.33	SDZ24-M
13M	12.984 12.966	12.84	SDZ13-M	25M	24.980 24.959	18.83	SDZ25-M
14M	13.984 13.966	13.34	SDZ14-M				

Available in two (2) series:

"DSDU"– mild carbon steel, ground to size

"DSDY"– 304 Stainless Steel

Each assembly includes one shaft and two retainers. Stainless steel retainer provided with series "DSDY".

Other retainers are available on request. (see Section VII, page 17 – 20).

Shafts and retainers may be ordered separately.

Masterline Metric Special Tolerance Double Retainer Shaft Assembly (for PTFE Bearings)

To specify metric (millimeters) when ordering, use a capital "M" behind each dimension.

How To Order:

12M x 75M – DSDU

"A" Diameter Length Dimension Series ("DSDU" or "DSDY")

All Parts Available In Inch And Metric.