

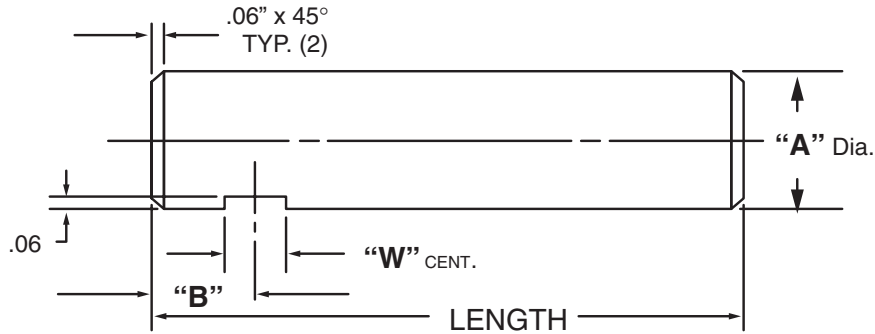


Masterline® Design & Mfg., Inc.

DESIGN SERVICES & PRODUCTS

41580 Production Dr. • Harrison Twp., Michigan 48045 • (586) 463-5888 • Fax (586) 463-8817

MASTERLINE SET SCREW SHAFT



For Tolerance on "A" Dia., see Section I, page 7

"A" Dia.	"W" Dim.	Cad File No.	"A" Dia.	"W" Dim.	Cad File No.
.250	.25	SZ250	1.250	.50	SZ1250
.312	.25	SZ312	1.375	.50	SZ1375
.375	.31	SZ375	1.500	.62	SZ1500
.437	.31	SZ437	1.625	.62	SZ1625
.500	.31	SZ500	1.750	.62	SZ1750
.562	.37	SZ562	2.000	.62	SZ2000
.625	.37	SZ625	2.250	.62	SZ2250
.750	.37	SZ750	2.500	.75	SZ2500
.875	.50	SZ875	2.750	.75	SZ2750
1.000	.50	SZ1000	3.000	.75	SZ3000
1.125	.50	SZ1125			

Available in four (4) series:

- "SS" – 12L14 CRS
- "SM" – T.G. & P. Alloy, HDN R_c 28-32
- "SH" – 12L14 CRS, CARB., HDN. & GR., R_c 56-60 (.03 min. case)
- "SY" – 304 Stainless Steel

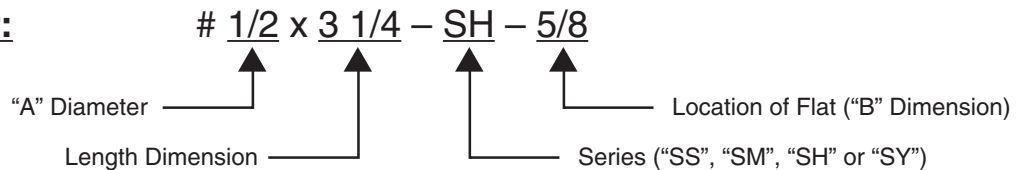
Other diameters are available on request. (see "How To Order")

Shafts are available with lube holes, lube grooves and extractor options.

(refer to Sec. II, page 33 and Sec. V, page 1 & 4)

Masterline Set Screw Shaft

How To Order:



All Parts Available In Inch And Metric.