

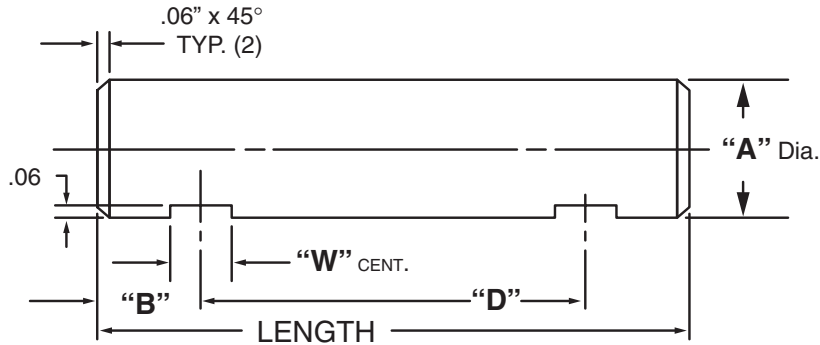


Masterline® Design & Mfg., Inc.

DESIGN SERVICES & PRODUCTS

41580 Production Dr. • Harrison Twp., Michigan 48045 • (586) 463-5888 • Fax (586) 463-8817

## MASTERLINE DOUBLE-FLAT SET SCREW SHAFT



For Tolerance on "A" Dia., see Section I, page 7

"A" Dia.	"W" Dim.	Cad File No.	"A" Dia.	"W" Dim.	Cad File No.
.250	.25	SDZ250	1.250	.50	SDZ1250
.312	.25	SDZ312	1.375	.50	SDZ1375
.375	.31	SDZ375	1.500	.62	SDZ1500
.437	.31	SDZ437	1.625	.62	SDZ1625
.500	.31	SDZ500	1.750	.62	SDZ1750
.562	.37	SDZ562	2.000	.62	SDZ2000
.625	.37	SDZ625	2.250	.62	SDZ2250
.750	.37	SDZ750	2.500	.75	SDZ2500
.875	.50	SDZ875	2.750	.75	SDZ2750
1.000	.50	SDZ1000	3.000	.75	SDZ3000
1.125	.50	SDZ1125			

Available in four (4) series:

"SDS" – 12L14 CRS

"SDM" – T.G. & P. Alloy, HDN R<sub>c</sub> 28-32

"SDH" – 12L14 CRS, CARB., HDN. & GR., R<sub>c</sub> 56-60 (.03 min. case)

"SDY" – 304 Stainless Steel

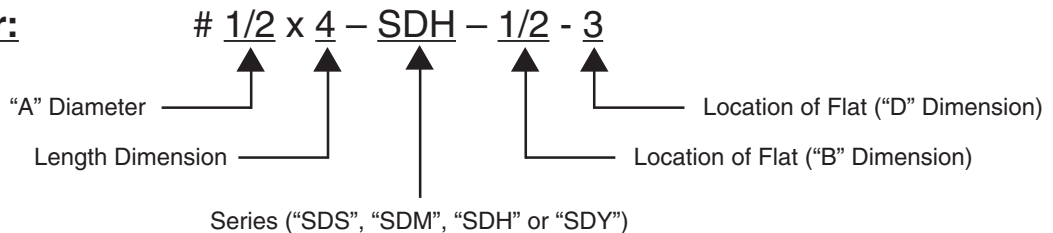
Other diameters are available on request. (see "How To Order")

Shafts are available with lube holes, lube grooves and extractor options.

(refer to Sec. II, page 37 and Sec. V, page 1 & 4)

### Masterline Double-Flat Set Screw Shaft

#### How To Order:



All Parts Available In Inch And Metric.