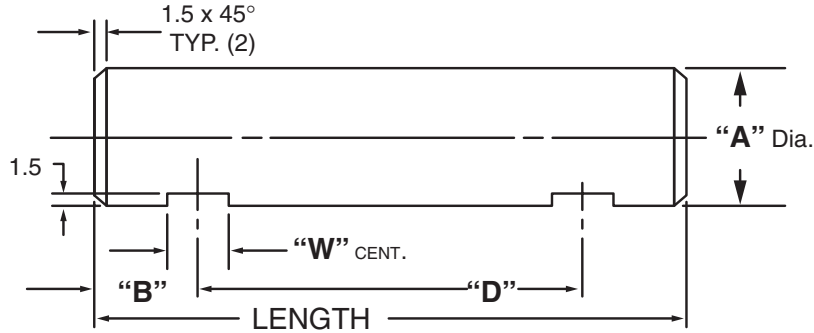




**MASTERLINE METRIC DOUBLE-FLAT SET SCREW SHAFT**



For Tolerance on "A" Dia., see Section I, page 7

"A" Dia.	"W" Dim.	"A" Dia.	"W" Dim.
6M	6.3M	25M	12.7M
7M	6.3M	30M	12.7M
8M	6.3M	35M	12.7M
10M	7.8M	40M	15.9M
12M	7.8M	45M	15.9M
13M	7.8M	50M	15.9M
15M	9.5M	55M	15.9M
16M	9.5M	60M	15.9M
18M	9.5M	65M	19.1M
20M	12.7M	70M	19.1M
22M	12.7M	75M	19.1M
24M	12.7M		

Available in four (4) series:

- "SDS" – 12L14 CRS
- "SDM" – T.G. & P. Alloy, HDN R<sub>c</sub> 28-32
- "SDH" – 12L14 CRS, CARB., HDN. & GR., R<sub>c</sub> 56-60 (.75mm min. case)
- "SDY" – 304 Stainless Steel

Other diameters are available on request. (see "How To Order")

Shafts are available with lube holes, lube grooves and extractor options.

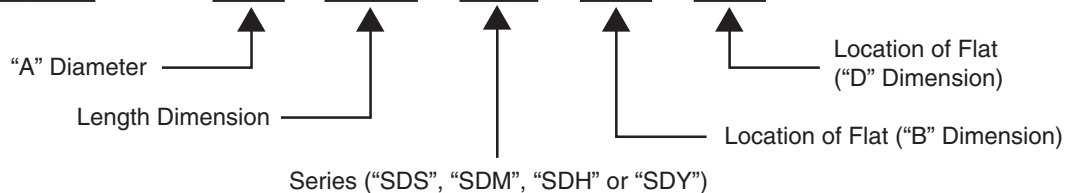
(refer to Sec. II, page 38 and Sec. V, page 1 & 4)

**Masterline Metric Double-Flat Set Screw Shaft**

To specify metric (millimeters) when ordering, use a capital "M" behind each dimension.

**How To Order:**

# 20M x 100M – SDH – 20M – 60M



All Parts Available In Inch And Metric.