

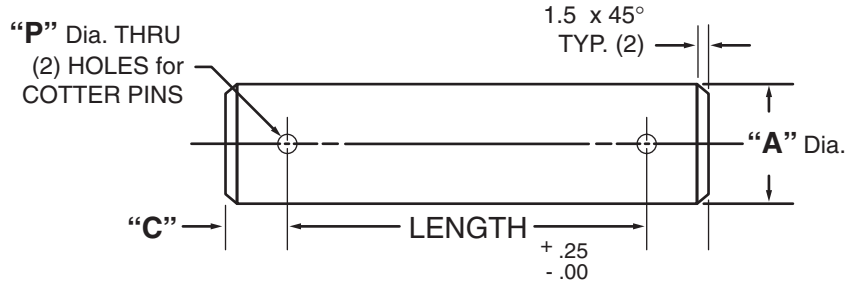


Masterline® Design & Mfg., Inc.

DESIGN SERVICES & PRODUCTS

41580 Production Dr. • Harrison Twp., Michigan 48045 • (586) 463-5888 • Fax (586) 463-8817

## MASTERLINE METRIC HEADLESS COTTER PIN SHAFT



For Tolerance on "A" Dia., see Section I, page 7

"A" Dia.	"C" Dim.	"P" Dia.	"A" Dia.	"B" Dim.	"P" Dia.
6M	4.8M	2.8M	35M	9.5M	5.2M
8M	6.4M	3.6M	40M	12.7M	6.8M
10M	6.4M	3.6M	45M	12.7M	6.8M
12M	6.4M	3.6M	50M	12.7M	6.8M
13M	7.9M	4.4M	55M	12.7M	6.8M
15M	7.9M	4.4M	60M	12.7M	6.8M
16M	7.9M	4.4M	65M	15.9M	8.0M
20M	9.5M	5.2M	70M	15.9M	8.0M
25M	9.5M	5.2M	75M	15.9M	8.0M
30M	9.5M	5.2M			

Available in four (4) series:

"HCS" – 12L14 CRS

"HCM" – T.G. & P. Alloy, HDN R<sub>C</sub> 28-32

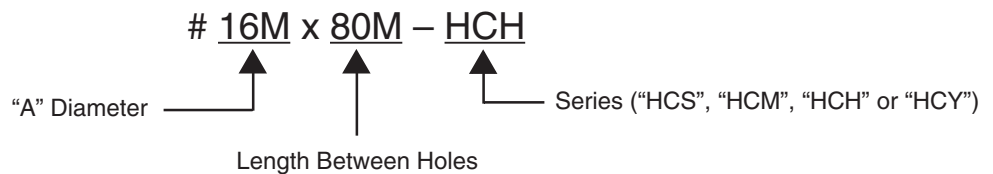
"HCH" – 12L14 CRS, CARB., HDN. & GR., R<sub>C</sub> 56-60 (.75mm min. case)

"HCY" – 304 Stainless Steel

Other diameters are available on request. (see "How To Order")

### Masterline Metric Headless Cotter Pin Shaft

#### How To Order:



All Parts Available In Inch And Metric.