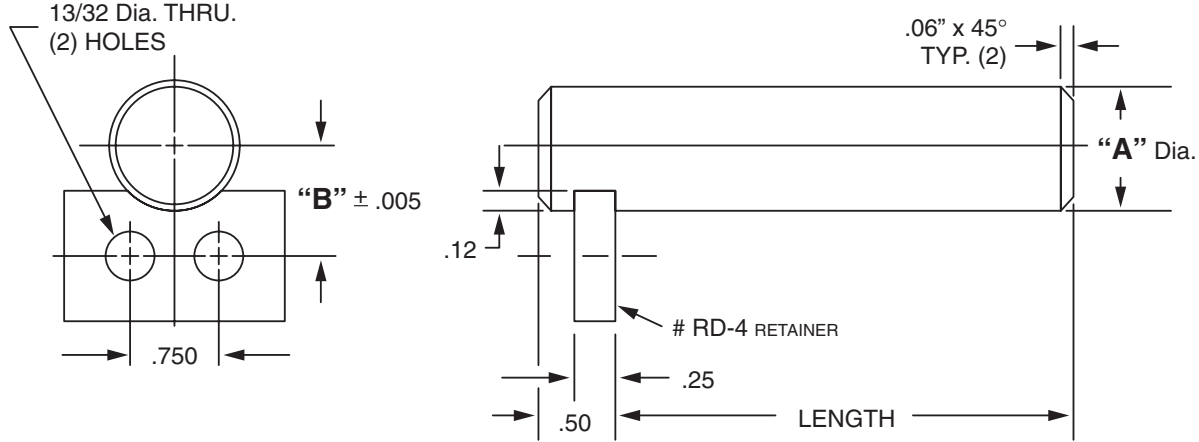




MASTERLINE HEAVY DUTY SHAFT ASSEMBLY



For Tolerance on "A" Dia., see Section I, page 7

"A" Dia.	"B" Dim.	Cad File No.	"A" Dia.	"B" Dim.	Cad File No.
1.000	.875	HDZ1000	2.000	1.375	HDZ2000
1.250	1.000	HDZ1250	2.250	1.500	HDZ2250
1.500	1.125	HDZ1500	2.500	1.625	HDZ2500
1.750	1.250	HDZ1750	3.000	1.875	HDZ3000

Available in four (4) series:

- "S" - 12L14 CRS
- "M" - T.G. & P. Alloy, HDN R_C 28-32
- "H" - 12L14 CRS, CARB., HDN. & GR., R_C 56-60 (.03 min. case)
- "Y" - 304 Stainless Steel

Other diameters are available on request. (see "How To Order")

Each assembly includes one shaft and one retainer. Stainless steel retainer provided with series "Y".

Other retainers are available on request. (see Section VII, page 17 - 20).

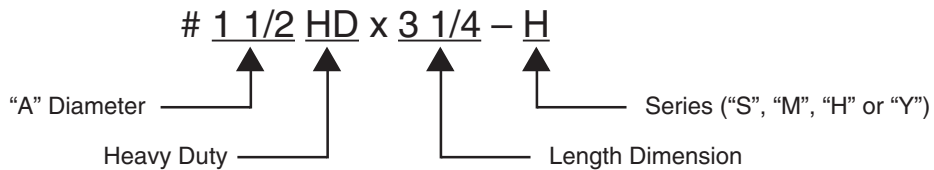
Shafts and retainers may be ordered separately.

Shafts are available with lube holes, lube grooves and extractor options.

(refer to Sec. II, page 7 and Sec. V, page 1 & 4)

Masterline Heavy Duty Shaft Assembly

How To Order:



All Parts Available In Inch And Metric.