

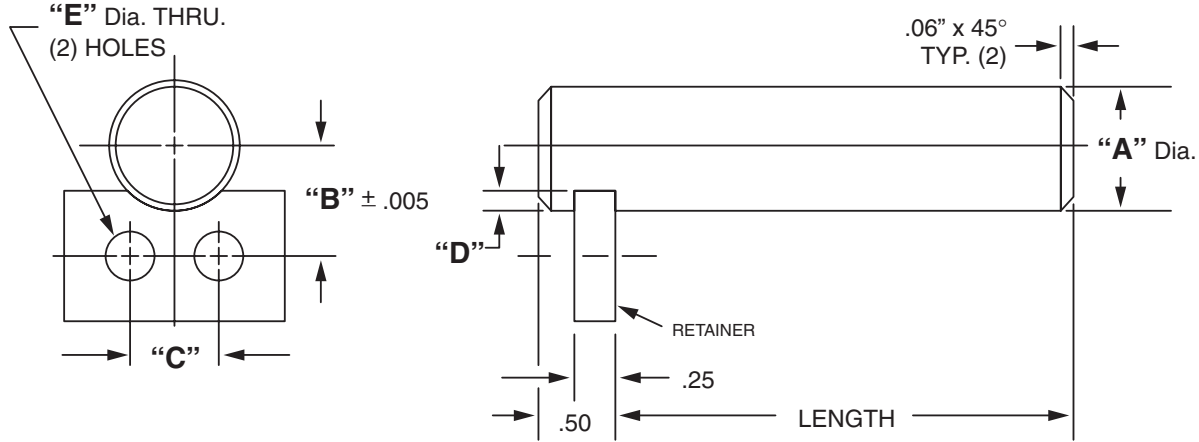


Masterline® Design & Mfg., Inc.

DESIGN SERVICES & PRODUCTS

41580 Production Dr. • Harrison Twp., Michigan 48045 • (586) 463-5888 • Fax (586) 463-8817

MASTERLINE EXTRA HEAVY DUTY SHAFT ASSEMBLY



For Tolerance on "A" Dia., see Section I, page 7

| "A" Dia. | "B" Dim. | "C" Dim. | "D" Dim. | "E" Dia. | Retainer | Cad File No. |
|----------|----------|----------|----------|----------|----------|--------------|
| 1.250 | 1.195 | 1.12 | .25 | 11/32 | RD-8 | EUZ1250 |
| 1.500 | 1.320 | 1.12 | .25 | 11/32 | RD-8 | EUZ1500 |
| 1.750 | 1.445 | 1.12 | .25 | 11/32 | RD-8 | EUZ1750 |
| 2.000 | 1.570 | 1.12 | .25 | 11/32 | RD-8 | EUZ2000 |
| 2.250 | 1.695 | 1.12 | .25 | 11/32 | RD-8 | EUZ2250 |
| 2.500 | 1.875 | 1.50 | .38 | 13/32 | RD-9 | EUZ2500 |
| 2.750 | 2.000 | 1.50 | .38 | 13/32 | RD-9 | EUZ2750 |
| 3.000 | 2.125 | 1.50 | .38 | 13/32 | RD-9 | EUZ3000 |
| 3.500 | 2.375 | 1.50 | .38 | 13/32 | RD-9 | N/A |
| 4.000 | 2.625 | 1.50 | .38 | 13/32 | RD-9 | N/A |

Available in four (4) series:

"US" – 12L14 CRS

"UM" – T.G. & P. Alloy, HDN R_C 28-32

"UH" – 12L14 CRS, CARB., HDN. & GR., R_C 56-60 (.03 min. case)

"UY" – 304 Stainless Steel

Other diameters are available on request. (see "How To Order")

Each assembly includes one shaft and one retainer. Stainless steel retainer provided with series "UY".

Other retainers are available on request. (see Section VII, page 17 – 20).

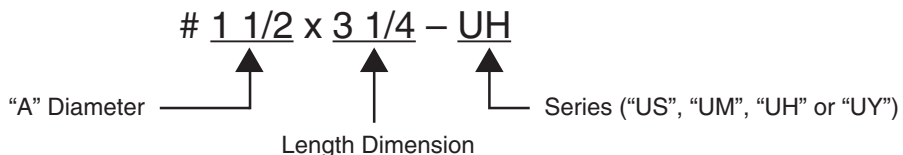
Shafts and retainers may be ordered separately.

Shafts are available with lube holes, lube grooves and extractor options.

(refer to Sec. II, page 11 and Sec. V, page 1 & 4)

Masterline Extra Heavy Duty Shaft Assembly

How To Order:



All Parts Available In Inch And Metric.