

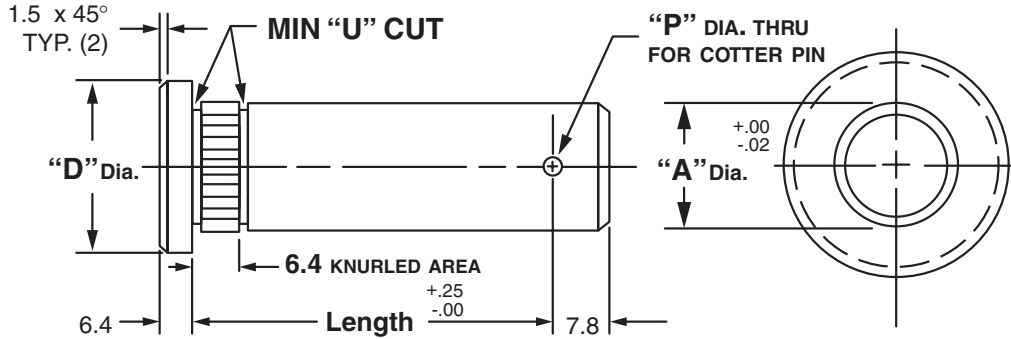


Masterline® Design & Mfg., Inc.

DESIGN SERVICES & PRODUCTS

41580 Production Dr. • Harrison Twp., Michigan 48045 • (586) 463-5888 • Fax (586) 463-8817

MASTERLINE METRIC HEAD TYPE KNURLED COTTER PIN SHAFT



"A" Dia.	"D" Dia.	"P" Dia.
6M	12.7M	2.8M
8M	15.8M	3.6M
10M	19.0M	3.6M
12M	25.4M	3.6M
14M	25.4M	3.6M
16M	31.7M	4.4M

"A" Dia.	"D" Dia.	"P" Dia.
18M	31.7M	4.4M
20M	38.1M	5.2M
25M	44.4M	5.2M
30M	50.8M	5.2M
35M	50.8M	5.2M
40M	53.8M	6.7M

Available in four (4) series:

- "KCS" – 12L14 CRS
- "KCM" – T.G. & P. Alloy, HDN R_c 28-32
- "KCH" – 12L14 CRS, CARB., HDN. & GR., R_c 56-60 (.75mm min. case)
- "KCY" – 304 Stainless Steel

Other diameters are available on request. (see "How To Order")

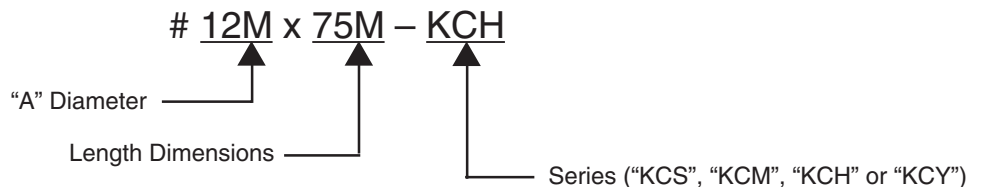
Shafts are available with lube holes, lube grooves and extractor option.

(refer to Sec. III, page 20 and Sec. V, page 1 & 4)

Masterline Metric Head Type Knurled Cotter Pin Shaft

To specify metric (millimeters) when ordering, use a capital "M" behind each dimension.

How To Order:



All Parts Available In Inch And Metric.