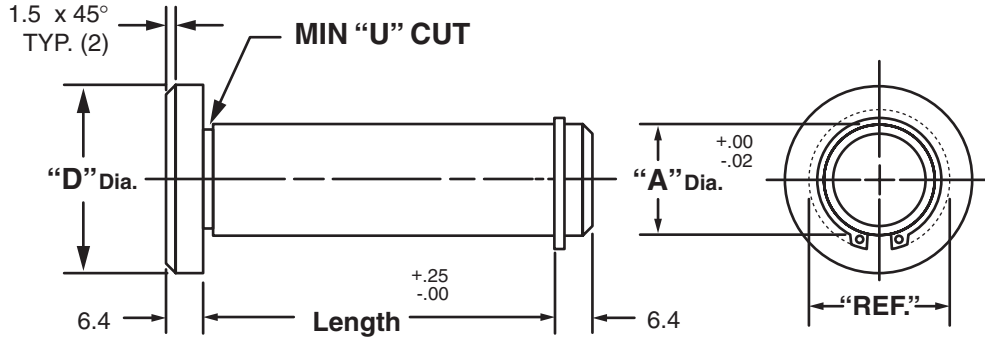




MASTERLINE METRIC HEAD TYPE SNAP RING SHAFT



"A" Dia.	"D" Dia.	"REF" Dia.
6M	12.7M	9.1M
8M	15.8M	13.7M
10M	19.0M	15.7M
12M	25.4M	17.5M
14M	25.4M	20.6M
16M	31.7M	23.9M

"A" Dia.	"D" Dia.	"REF" Dia.
18M	31.7M	27.7M
20M	38.1M	28.4M
25M	44.4M	35.6M
30M	50.8M	41.1M
35M	50.8M	46.0M
40M	53.8M	50.8M

Available in four (4) series:

- "HRS" – 12L14 CRS
- "HRM" – T.G. & P. Alloy, HDN R_C 28-32
- "HRH" – 12L14 CRS, CARB., HDN. & GR., R_C 56-60 (.75mm min. case)
- "HRY" – 304 Stainless Steel

Each assembly includes one (1) shaft and one (1) snap ring.

NOTE: Snap rings under 7mm diameter are made of copper/beryllium.

Stainless steel snap rings provided with "HRY" series.

Shafts and snap rings may be ordered separately.

Other diameters are available on request. (see "How To Order")

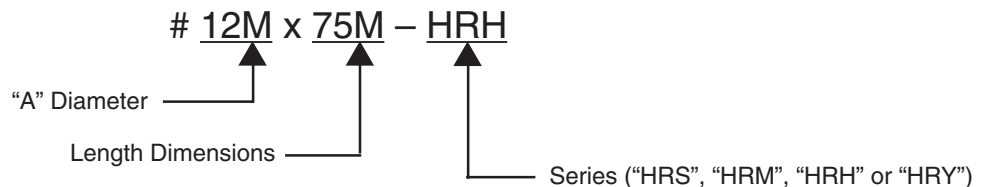
Shafts are available with lube holes, lube grooves and extractor option.

(refer to Sec. III, page 24 and Sec. V, page 1 & 4)

Masterline Metric Head Type Snap Ring Shaft

To specify metric (millimeters) when ordering, use a capital "M" behind each dimension.

How To Order:



All Parts Available In Inch And Metric.