

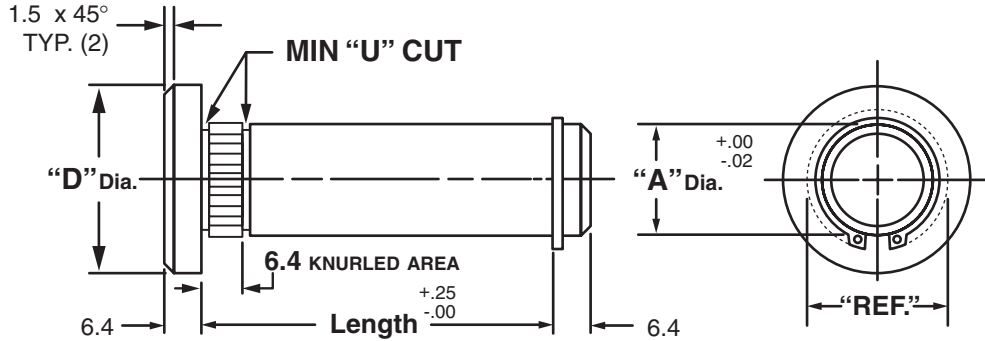


Masterline® Design & Mfg., Inc.

DESIGN SERVICES & PRODUCTS

41580 Production Dr. • Harrison Twp., Michigan 48045 • (586) 463-5888 • Fax (586) 463-8817

**MASTERLINE METRIC HEAD TYPE KNURLED SNAP RING SHAFT**



"A" Dia.	"D" Dia.	"REF" Dia.	"A" Dia.	"D" Dia.	"REF" Dia.
6M	12.7M	9.1M	18M	31.7M	27.7M
8M	15.8M	13.7M	20M	38.1M	28.4M
10M	19.0M	15.7M	25M	44.4M	35.6M
12M	25.4M	17.5M	30M	50.8M	41.1M
14M	25.4M	20.6M	35M	50.8M	46.0M
16M	31.7M	23.9M	40M	53.8M	50.8M

Available in four (4) series:

- "KRS" – 12L14 CRS
- "KRM" – T.G. & P. Alloy, HDN R<sub>c</sub> 28-32
- "KRH" – 12L14 CRS, CARB., HDN. & GR., R<sub>c</sub> 56-60 (.75mm min. case)
- "KRY" – 304 Stainless Steel

Each assembly includes one (1) shaft and one (1) snap ring.

NOTE: Snap rings under 7mm diameter are made of copper/beryllium.

Stainless steel snap rings provided with "KRY" series.

Shafts and snap rings may be ordered separately.

Other diameters are available on request. (see "How To Order")

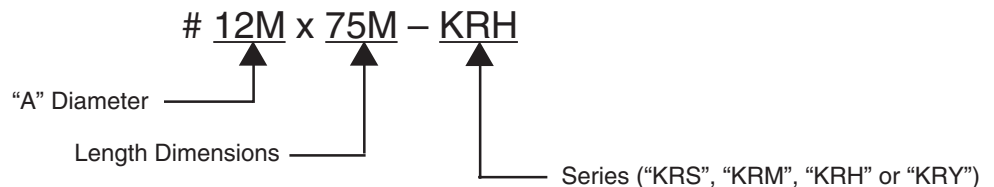
Shafts are available with lube holes, lube grooves and extractor option.

(refer to Sec. III, page 28 and Sec. V, page 1 & 4)

**Masterline Metric Head Type Knurled Snap Ring Shaft**

To specify metric (millimeters) when ordering, use a capital "M" behind each dimension.

**How To Order:**



All Parts Available In Inch And Metric.