

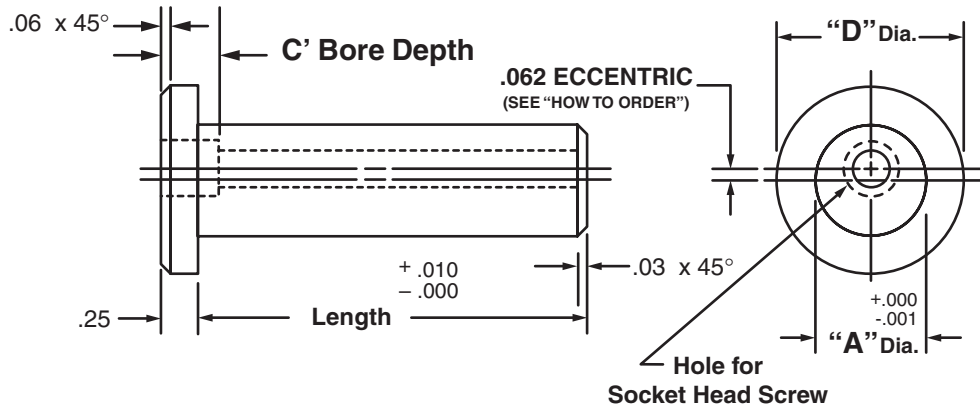


Masterline® Design & Mfg., Inc.

DESIGN SERVICES & PRODUCTS

41580 Production Dr. • Harrison Twp., Michigan 48045 • (586) 463-5888 • Fax (586) 463-8817

MASTERLINE PIVOT PIN



Pivot Pin No.	"A" Dia.	"D" Dia.	Soc. Hd. Scr.	C' Bore Depth	Cad File No.
MP1	.375	.88	# 8	.16	MP1
MP2	.437	.94	# 10	.19	MP2
MP3	.500	1.00	# 10	.19	MP3
MP4	.625	1.12	1/4	.25	MP4
MP5	.750	1.25	1/4	.25	MP5
MP6	.875	1.38	3/8	.38	MP6
MP7	1.000	1.50	3/8	.38	MP7
MP8	1.125	1.62	1/2	.50	MP8
MP9	1.250	1.75	1/2	.50	MP9
MP10	1.375	2.12	5/8	.62	MP10
MP11	1.500	2.25	5/8	.62	MP11

Available in four (4) series:

"MPS" – 12L14 CRS

"MPM" – T.G. & P. Alloy, HDN R_c 28-32

"MPH" – 12L14 CRS, CARB., HDN. & GR., R_c 56-60 (.03 min. case)

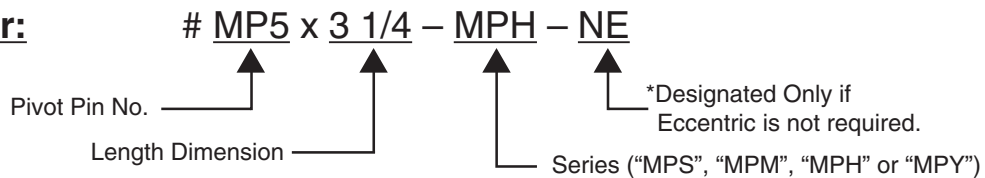
"MPY" – 304 Stainless Steel

Available in lengths up to 12 inches.

Special sizes are available on request. (See "How To Order")

Masterline Pivot Pin

How To Order:



All Parts Available In Inch And Metric.