

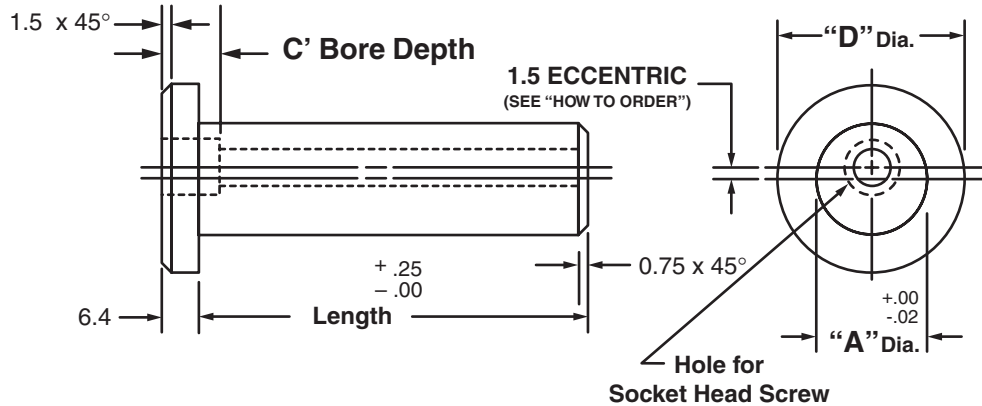


Masterline® Design & Mfg., Inc.

DESIGN SERVICES & PRODUCTS

41580 Production Dr. • Harrison Twp., Michigan 48045 • (586) 463-5888 • Fax (586) 463-8817

MASTERLINE METRIC PIVOT PIN



Pivot Pin No.	"A" Dia.	"D" Dia.	Soc. Hd. Scr.	C' Bore Depth	Cad File No.
MMP1	10M	22.3M	2M	2M	MMP1
MMP2	12M	25.4M	4M	4M	MMP2
MMP3	15M	28.5M	4M	4M	MMP3
MMP4	17M	28.5M	6M	6M	MMP4
MMP5	20M	31.7M	6M	6M	MMP5
MMP6	25M	38.1M	8M	8M	MMP6
MMP7	30M	41.1M	10M	10M	MMP7
MMP8	35M	53.8M	12M	12M	MMP8
MMP9	40M	57.1M	16M	16M	MMP9

Available in four (4) series:

"MPS" – 12L14 CRS

"MPM" – T.G. & P. Alloy, HDN R_c 28-32

"MPH" – 12L14 CRS, CARB., HDN. & GR., R_c 56-60 (0.75mm min. case)

"MPY" – 304 Stainless Steel

Available in lengths up to 300 Millimeters.

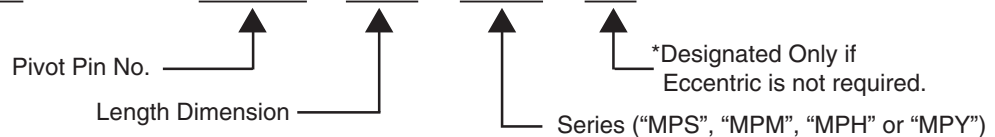
Special sizes are available on request. (See "How To Order")

Masterline Metric Pivot Pin

To specify metric (millimeters) when ordering, use a capital "M" behind each dimension.

How To Order:

MMP5 x 76M – MPH – NE



All Parts Available In Inch And Metric.