

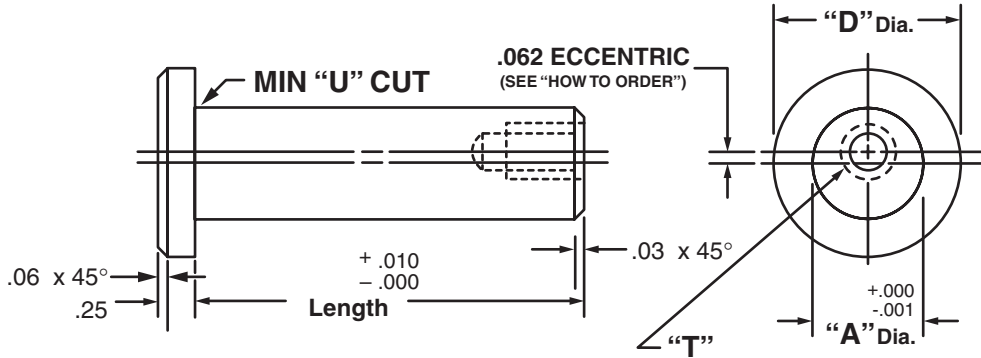


Masterline® Design & Mfg., Inc.

DESIGN SERVICES & PRODUCTS

41580 Production Dr. • Harrison Twp., Michigan 48045 • (586) 463-5888 • Fax (586) 463-8817

MASTERLINE TAPPED PIVOT PIN



Pivot Pin No.	"A" Dia.	"D" Dia.	"T" Tapped Hole	Cad File No.
MT1	.375	.88	# 8 - 32 x 1/2" DP.	MT1
MT2	.437	.94	# 10-24 x 1/2" DP.	MT2
MT3	.500	1.00	# 10-24 x 1/2" DP.	MT3
MT4	.625	1.12	1/4-20 x 5/8" DP.	MT4
MT5	.750	1.25	3/8-16 x 3/4" DP.	MT5
MT6	.875	1.38	3/8-16 x 3/4" DP.	MT6
MT7	1.000	1.50	3/8-16 x 3/4" DP.	MT7
MT8	1.125	1.62	1/2-13 x 1" DP.	MT8
MT9	1.250	1.75	1/2-13 x 1" DP.	MT9
MT10	1.375	2.12	5/8-11 x 1 1/4" DP.	MT10
MT11	1.500	2.25	5/8-11 x 1 1/4" DP.	MT11

Available in four (4) series:

"MTS" - 12L14 CRS

"MTM" - T.G. & P. Alloy, HDN R_c 28-32

"MTH" - 12L14 CRS, CARB., HDN. & GR., R_c 56-60 (.03 min. case)

"MTY" - 304 Stainless Steel

Available in lengths up to 12 inches.

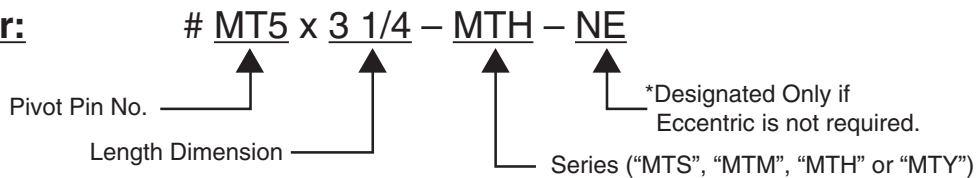
Special sizes are available on request. (See "How To Order")

Shafts are available with lube holes, lube grooves and extractor option.

(refer to Sec. III, page 33 and Sec. V, page 1 & 4)

Masterline Tapped Pivot Pin

How To Order:



All Parts Available In Inch And Metric.