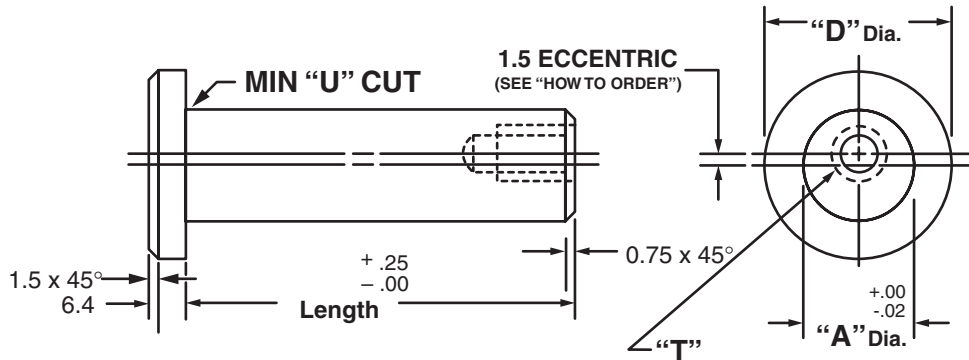




MASTERLINE METRIC TAPPED PIVOT PIN



Pivot Pin No.	"A" Dia.	"D" Dia.	"T" Tapped Hole	"T" Tap Options	Cad File No.
MMT1	10M	22.3M	2-0.4 x 10M DP.	# 8 – 32 x 1/2" DP.	MMT1
MMT2	12M	25.4M	4-0.7 x 10M DP.	# 10-24 x 1/2" DP.	MMT2
MMT3	15M	28.5M	4-0.7 x 10M DP.	# 10-24 x 1/2" DP.	MMT3
MMT4	17M	28.5M	6-1.0 x 12M DP.	1/4-20 x 5/8" DP.	MMT4
MMT5	20M	31.7M	6-1.0 x 12M DP.	3/8-16 x 3/4" DP.	MMT5
MMT6	25M	38.1M	8-1.25 x 16M DP.	3/8-16 x 3/4" DP.	MMT6
MMT7	30M	41.1M	10-1.5 x 20M DP.	1/2-13 x 1" DP.	MMT7
MMT8	35M	53.8M	12-1.75 x 24M DP.	5/8-11 x 1 1/4" DP.	MMT8
MMT9	40M	57.1M	16-2 x 32M DP.	5/8-11 x 1 1/4" DP.	MMT9

Available in four (4) series:

- "MTS" – 12L14 CRS
- "MTM" – T.G. & P. Alloy, HDN R_c 28-32
- "MTH" – 12L14 CRS, CARB., HDN. & GR., R_c 56-60 (0.75mm min. case)
- "MTY" – 304 Stainless Steel

Available in lengths up to 300 Millimeters.

Special sizes are available on request. (See "How To Order")

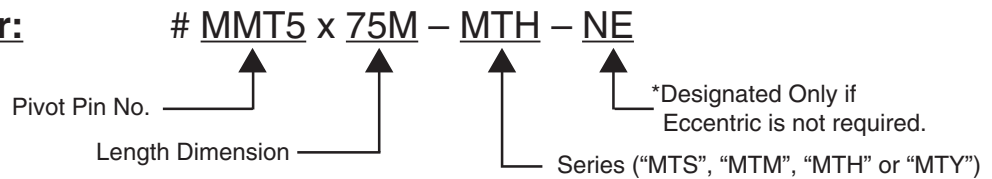
Shafts are available with lube holes, lube grooves and extractor option.

(refer to Sec. III, page 34 and Sec. V, page 1 & 4)

Masterline Metric Tapped Pivot Pin

To specify metric (millimeters) when ordering, use a capital "M" behind each dimension.

How To Order:



All Parts Available In Inch And Metric.