

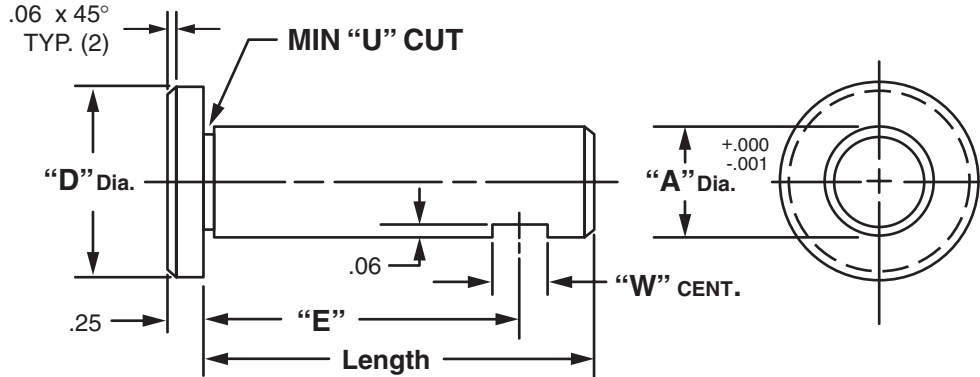


Masterline® Design & Mfg., Inc.

DESIGN SERVICES & PRODUCTS

41580 Production Dr. • Harrison Twp., Michigan 48045 • (586) 463-5888 • Fax (586) 463-8817

MASTERLINE HEAD TYPE SET SCREW FLAT SHAFT



"A" Dia.	"D" Dia.	"W" Dim.	Cad File No.
.250	.50	.25	HFZ249
.375	.62	.31	HFZ374
.500	1.00	.31	HFZ499
.625	1.12	.37	HFZ624
.750	1.25	.37	HFZ749
.875	1.38	.50	HFZ874

"A" Dia.	"D" Dia.	"W" Dim.	Cad File No.
1.000	1.50	.50	HFZ999
1.250	1.75	.50	HFZ1124
1.250	1.88	.50	HFZ1249
1.375	2.00	.50	HFZ1374
1.500	2.12	.62	HFZ1499

Available in four (4) series:

- "HFS" – 12L14 CRS
- "HFM" – T.G. & P. Alloy, HDN R_C 28-32
- "HFH" – 12L14 CRS, CARB., HDN. & GR., R_C 56-60 (.03 min. case)
- "Hfy" – 304 Stainless Steel

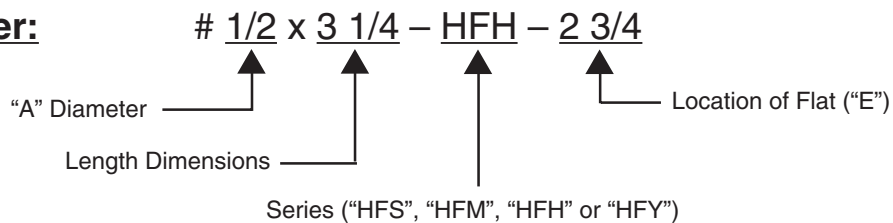
Other diameters are available on request. (see "How To Order")

Shafts are available with lube holes, lube grooves and extractor option.

(refer to Sec. III, page 7 and Sec. V, page 1 & 4)

Masterline Head Type Set Screw Flat Shaft

How To Order:



All Parts Available In Inch And Metric.