

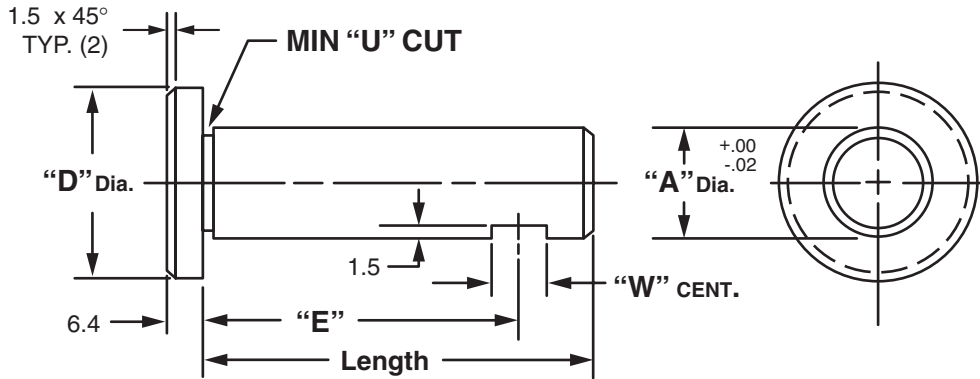


Masterline® Design & Mfg., Inc.

DESIGN SERVICES & PRODUCTS

41580 Production Dr. • Harrison Twp., Michigan 48045 • (586) 463-5888 • Fax (586) 463-8817

MASTERLINE METRIC HEAD TYPE SET SCREW FLAT SHAFT



"A" Dia.	"D" Dia.	"W" Dim.	Cad File No.
6M	12.7M	6.3M	HFZ6M
8M	15.8M	6.3M	HFZ8M
12M	25.4M	7.8M	HFZ12M
14M	25.4M	9.5M	HFZ14M
16M	28.4M	9.5M	HFZ16M
18M	31.7M	9.5M	HFZ18M

"A" Dia.	"D" Dia.	"W" Dim.	Cad File No.
20M	31.7M	12.7M	HFZ20M
25M	38.1M	12.7M	HFZ25M
30M	44.4M	12.7M	HFZ30M
35M	50.8M	12.7M	HFZ35M
40M	53.8M	15.9M	HFZ40M

Available in four (4) series:

- "HFS" – 12L14 CRS
- "HFM" – T.G. & P. Alloy, HDN R_c 28-32
- "HFH" – 12L14 CRS, CARB., HDN. & GR., R_c 56-60 (.75mm min. case)
- "HFY" – 304 Stainless Steel

Other diameters are available on request. (see "How To Order")

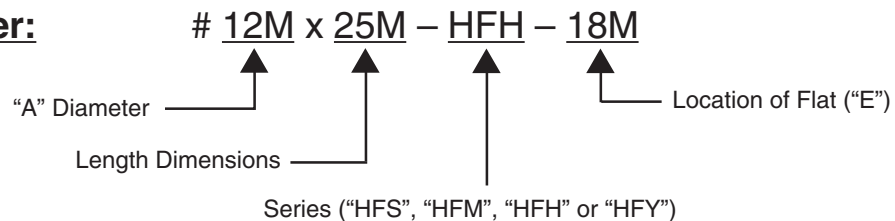
Shafts are available with lube holes, lube grooves and extractor option.

(refer to Sec. III, page 8 and Sec. V, page 1 & 4)

Masterline Metric Head Type Set Screw Flat Shaft

To specify metric (millimeters) when ordering, use a capital "M" behind each dimension.

How To Order:



All Parts Available In Inch And Metric.